

COMPANY PROFILE



CARDINAL TORCH
COMPANY LIMITED

Content

About Us 04

Products & Services 06

Our People 08

Our Partners 11

Our Commitment 12

Contact Us 14

ABOUT US



Cardinal Torch Company Limited was established in 2020 with the objective of transforming the commodity and agricultural trading sector in Nigeri and Africa. To this end, we leverage technology and innovation through ethical local collaborations to meet the increasing demand for Africa sourced agricultural commodities in the global market.

OUR VALUES

- Credit Worthiness
- Certification
- Traceability
- Promtness



At our core, we believe that the agricultural industry has the power to make a positive impact on the world. By promoting sustainable practices and empowering farmers and communities, we are working towards a more equitable and prosperous future for all.



MISSION

To always deliver the highest quality commodities to local and international markets-while offering innovation-fueled services to all our stakeholders

VISION

To become the leading commodities trading company in Africa, changing the way trading is done by bringing into play our innovative approach and leveraging relationships and our expertise.

OUR OPERATIONS



SOURCING

We have a network of qualified field operations personnel in diverse locations across Nigeria where we source produce. Our Quality Control team are hands-on to ensure our produce always meet quality specifications.



CORPORATE RESOURCES

Our Administrative functions are hosted at our corporate head office Located in Lagos, Nigeria, home to the major port terminals and export processing zones.



COMMODITY PROCESSING

Our processing centers are locally and internationally certified to produce and package raw cashews into semi-finished and finished products.



LOGISTICS

We engage the end-to-end logistics requirements of fulfilling the delivery of produce to customers desired location. Our warehouses and logistics operations are strategic and efficient in preserving produce quality while in transit.

PRODUCT & SERVICES

Our services span across the entire commodity value chain, From plantation to processing, supplies and exports



Plantation

Growing under the best conditions, leveraging technology



Processing

Transforming raw commodities into products



Supply

Connecting demand to supply efficiently



Local

We leverage our local partners to distribute locally



Exports

An efficient distribution network spread locally and globally



Imports

Reliable import of high-quality food commodities, backed by innovative logistics and a commitment to safety.

EXPORTS



COCOA

200 MT Cocoa beans
monthly



CASHEW

200 MT Raw Cashew
nuts monthly



SESAME

200 MT Sesame
Seeds monthly

IMPORTS



WHEAT

500 MT Wheat
monthly



MILLET

300 MT Millet
monthly



MIAZE

500 MT Miaze
monthly



HUSKED BROWN RICE

300 MT Husked
Brown Rice monthly



GRAIN SORGHUM

300 MT Grain
Sorghum monthly



BEANS

200 MT Beans
monthly

OUR PEOPLE

Cardinal Torch is a truly diverse company where talent is combined with experience to drive our business forward.

MEET OUR MANAGEMENT TEAM



David Olurin Jr.
Chief Executive Officer

David is an astute business professional with over twenty years of successful business experience in various sectors including commodity trading. His professional background has given him a huge leverage to sit as the chief executive of Cardinal Torch. He is an Alumni of the Metropolitan school of business management London (MSBM) and the Lagos business School (LBS).



David Imosili
Chief Financial Officer

David Imosili is an accomplished Chartered Accountant & Tax Practitioner with 10 years experience in financial & corporate management. He comes with a good level of accounting, finance and audit. His professional certification and experience has earned him overseeing the account and finance team of Cardinal Torch.



Oluwaseun Kushimo
Lead Agronomist / Operations

Oluwaseun possesses years of sound experience and certifications in agri-business and its processes such as agronomy, agro processing, food safety/food handling etc with a bachelor's degree in Agriculture. He has skills required for training and management in areas such as Good Agricultural Practises and Food Safety Management. He is a certified COLEACP coach.

MEET OUR MANAGEMENT TEAM



Ndutimobong Sunday-Enang Client Relations / Business Development Officer

Ndutim is tasked with Business Development and collaborating with field teams to deliver solutions in line with Cardinal Torch's vision. An eclectic, she has garnered Product Management experience from diverse sectors such as construction where she holds a Master's degree in Construction Technology. With an affinity for IT, SEM and having recently interned at Microsoft, she's bringing a unique blend of skills and insight to help Cardinal Torch achieve operational goals.



Nancy Ossai HR / Admin Officer

Nancy is an experienced Client Relations and Administrative Manager with over nine years working experience in the Telecoms and Banking sector. She holds an MBA in Human Resources. Self-motivated, committed, and passionate about relations in general, a professional with competence in organizational procedures. She oversees all administrative functions at Cardinal Torch and is a primary point of contact between the organization, management and the operations team, supplier and consumer.



Ayotunde Adebayo Trade Finance / Treasury Officer

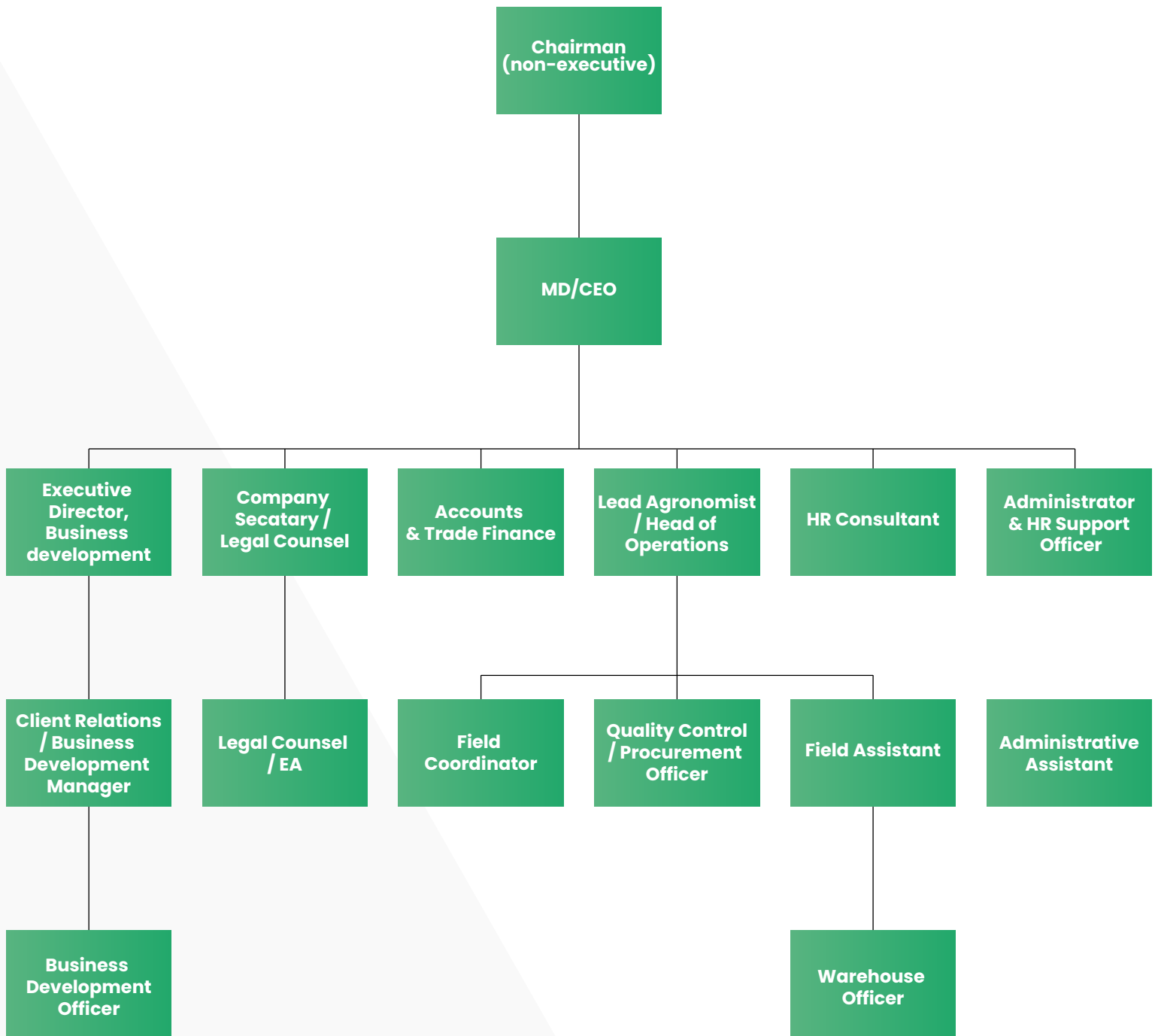
Ayotunde is a seasoned Credit and Treasury Specialist with commendable years of work experience in consumer lending, treasury and portfolio management in the banking sector with core competencies in Credit Risk and Treasury management with certification in Enterprise Risk Management. He holds BSc. in Economics and Masters in Business Studies. He is a member of Nigeria Institute of management as well as a prospective member of Chartered Risk Management of Nigeria.



Oluwatobi Awe Legal Counsel / EA

Oluwatobi is an adept professional with an excellent understanding of the law and its functionality. He holds Bachelor of Laws from Nigerian Law School and is currently pursuing a Master of Laws at the University of Illinois USA.

MANAGEMENT TEAM ORGANOGRAM



OUR PARTNERS

We have strong relationships with leading businesses across industries that contribute to our strength as Cardinal Torch

TRADE PARTNERS



FINANCIAL PARTNERS



SUBSIDIARIES

Cardinal Energies

Cardinal Energies is an innovative energy company with focus in the entire value chain in the oil and gas space covering the downstream, midstream and upstream sector. The company will operate across the entire spectrum of the oil & gas space by exploring the following key areas in the sector; petroleum trading, crude sales, Gas sales, key investment in marginal field or existing OML or OPL, storage solutions and etc. Nevertheless, our key focus as we commence operations will be in the downstream space. Cardinal energies shall expand its activity in the trading space by providing services that cover the entire supply value chain. The company will be involved in the large-scale export and import of petroleum products with the aim of becoming a leading supplier of petroleum products to Nigeria and West Africa. We will trade an extensive range of refined petroleum products and crude oil throughout Africa. Our product range will include Jet A1, Liquefied Petroleum Gas, Gasoline, Dual Purpose Kerosene, Diesel, Low/High Pour Fuel Oil, Naphtha, Base Oil and Bitumen. Cardinal energies will be responsible primarily for the supply of refined petroleum products into Nigeria, however the long term plan is to build the necessary capacity to supply petroleum products into new and emerging markets in Africa.

OUR COMMITMENT

Farmers

Improved standard of living for farmers by encouraging better output and adequate compensation.

Investors

Profitable returns for stakeholders in our business and beyond that, we have created a business that delivers impact.

Local Communities

Direct and Indirect employment opportunities created for residents in our communities of operation.

Capacity Development

Through training and educating stakeholders on industry best practices and business.

COMPANY REGISTRATION



EXPORTING CERTIFICATE



CARDINAL TORCH
COMPANY LIMITED

CARDINAL
COMP

GET IN TOUCH!

We'd love to hear from you! Whether you have questions, feedback, or just want to connect, feel free to reach out. Your thoughts and insights are important to us, and we're here to help.



Email
info@cardinaltorch.com



Phone
+2348139509210, +447889447332



Address
19b Daranijo Street, Victoria Island, Lagos